




## CONTACT US

 12005 N. Burgard Road, Portland, OR 97203

 (503) 286-7791  
(Rapid Response available 24/7)




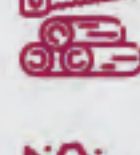
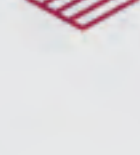
 [info@westernmachine.com](mailto:info@westernmachine.com)

 <https://westernmachine.com>

# INDUSTRIAL REPAIR

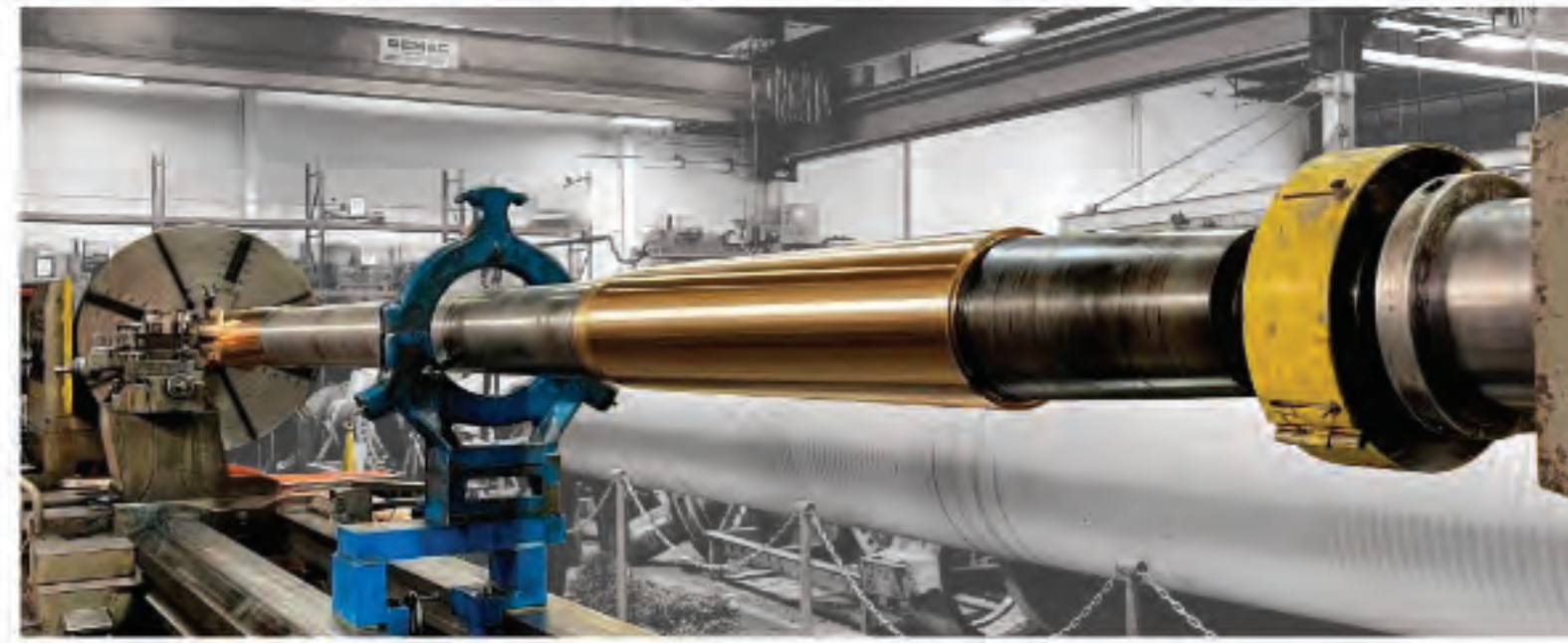
-  QUICK TURNAROUND AND EXPEDITED REPAIRS
-  TOTAL PROJECT MANAGEMENT TO FREE UP YOUR RESOURCES
-  LARGE MACHINING CAPACITY TO 40,000 POUNDS
-  ENGINEERING EXPERTISE TO ENSURE BEST REPAIRS

# INDUSTRIES WE SERVE

-  MARINE
-  STEEL PROCESSING
-  ENERGY & POWER
-  WOOD PRODUCTS
-  ROCK CRUSHING
-  CONSTRUCTION
-  PLASTICS

# OUR SERVICES

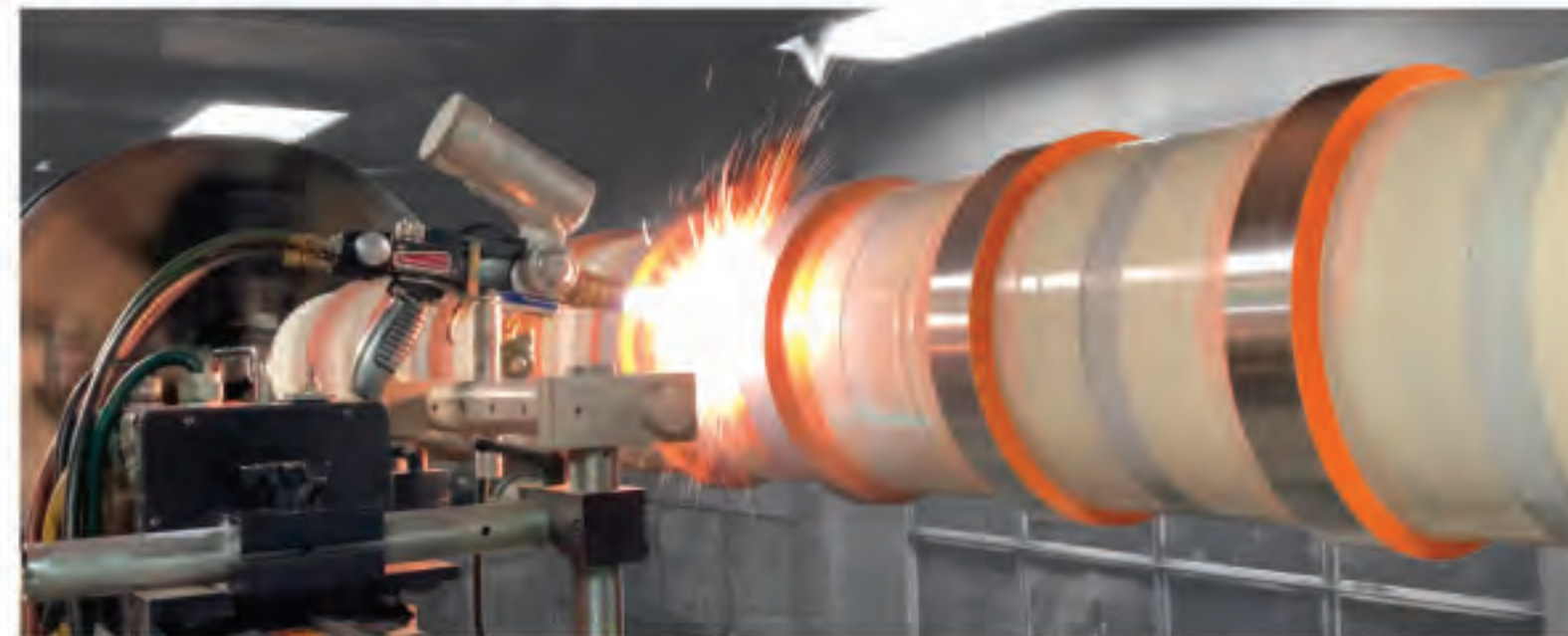
## REPAIR & UPGRADES



Western Machine Works has the skilled machinists, machine tools, and project management resources to complete repairs and upgrades to your equipment and machinery.

- Our "Job Shop Mentality" is geared towards challenging repairs and expedited schedules.
- Our specialized unique repair processes save clients the costs of replacing expensive equipment.
- Day shift and swing shift shop staffing maintain continuity of repairs to get you back up and running quickly.
- 40,000-pound lifting capacity allows large equipment to be handled safely and efficiently.
- To reduce lead time, our design engineers routinely reverse engineer components to repair or manufacture replacement parts.

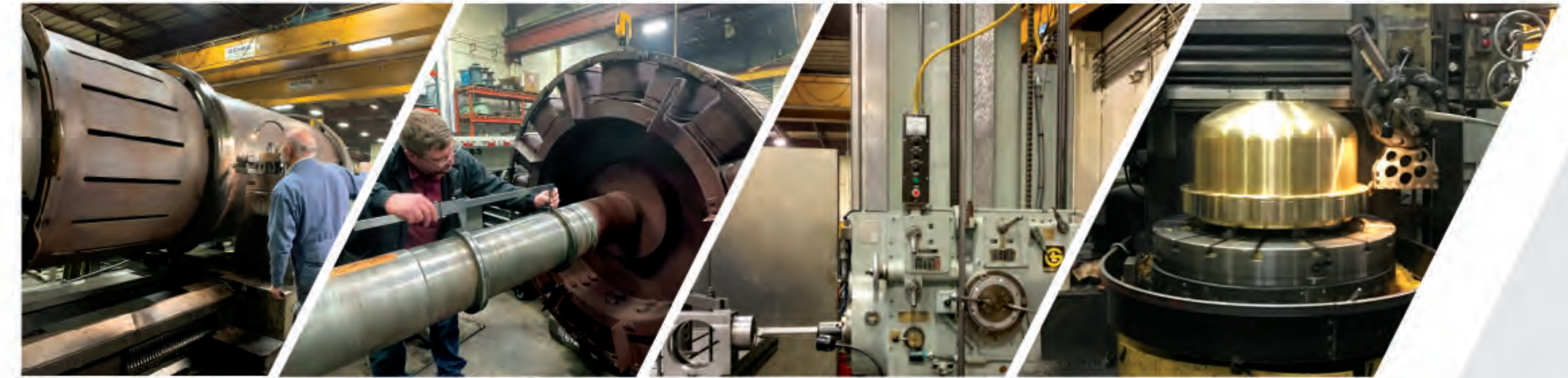
## METALLIZING



- Restore bearing fits and other wear surfaces to OEM specifications.
- A twin wire arc process using 420 stainless steel, yields bond strength in excess of 6,000 psi.
- Extremely cost and time effective vs. having to manufacture and install new shafts.
- 40-45 HRC provides a superior bearing fit surface that is resilient to fretting and corrosion.

## FABRICATION & NEW MANUFACTURE

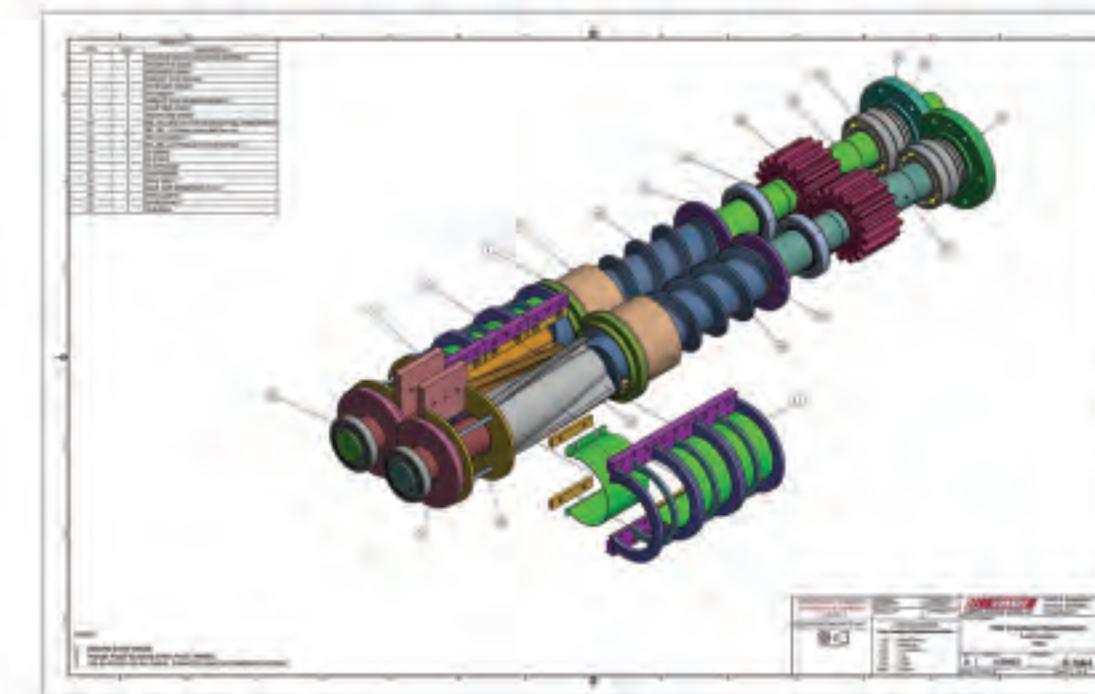
- New components are improved with CAD design and upgraded materials to meet today's operating demands.
- WMW specializes in quick turnaround manufacturing to meet your schedule.
- New parts can be manufactured quickly using engineered fabrications vs. long lead time castings in most cases.



## INDUSTRIAL REPAIR FACILITY

- 34,000 Square foot facility
- 40,000 lbs. lifting capacity
- Vertical Boring Mill – 103" max. heavy duty vertical
- Engine Lathe – 78 3/4" diameter over ways
- Horizontal Boring Mill – 60" x 120" Table, 103" cross table travel
- 40 foot flatbed truck

## ENGINEERING & DESIGN



- We maintain a staff of engineers to validate repair and manufacturing processes to ensure that your equipment operates at or above OEM specifications.
- We reverse engineer and generate CAD drawings of virtually any component.
- Failure analysis and redesign helps avoid repeated failures resulting in expensive downtime and production loss.
- Our stringent engineering standards are integrated into our business model to provide quality repairs and reliable new manufacture of components.

## PROJECT MANAGEMENT & TRANSPORTATION SERVICES

- Expert technical and logistics project management services allow you to get back to work on big picture priorities.
- On-site consultations to review your project requirements and explore the best options for your needs and schedule.
- Company owned truck fleet ensure prompt, prioritized service.
- Minimize downtime with our 24/7 Rapid Response Service.



# WHO WE ARE

Western Machine Works was established in Portland Oregon in 1985 as a full-service machine shop specializing in all facets of equipment repair, upgrades, and new manufacture. More than just a machine shop, WMW provides engineering-focused approach to its repairs, refurbishments, and fabrications. Its 34,000 sq. ft facility is equipped to handle machining, grinding, balancing, welding, and metallizing of large rotating equipment and shafts for the Hydro & Wind Industry, Marine, Pulp & Paper, and other heavy industries. WMW provides reliability while offering reverse engineering, on-site measurements of critical components, in-house transportation services, 24/7 rapid response, and total project management. Minimize downtime and achieve peak efficiency for your operations with Western Machine Works.

